



University College Dublin
Established 1854



About Ireland

Population: 4.5 million (UN, 2010)
Capital: Dublin
Area: 70,182 sq km (27,097 sq miles)
Major languages: English, Irish
Currency = Euro
International Dialling Code: + 353



UCD School of Applied Social Science

Higher Diploma in SOCIAL POLICY

Why is this course for me?

This course is for people who wish to change career and pursue further training and careers in Social Work or Social Policy.

What does it involve?

It is a 1 year, full-time course providing a foundation in Social Policy for graduates of other disciplines.

What will I study?*

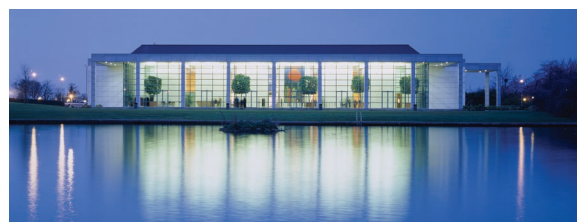
The course provides a selection of modules from the BSocSc undergraduate Social Policy programme.

Core modules include:

- Exploring Contemporary Social Policy
- Social Policy, Social Issues & the Life Cycle
- Irish Social Policy & the Welfare State
- Policy Development & Evaluation
- Theories & Concepts
- The Economics of Social Policy

Optional modules include:

- Introduction to Social Work
- Social Work in Practice
- Crime, Social Services & the Justice System
- Housing Policies, Markets & Homes
- Comparative Social Policy
- Migration, Ethnicity & Social Change
- History and Development of Social Policy
- Social Policy & the Environment
- Gender & Social Policy Analysis
- Sexual & Reproductive Health Rights



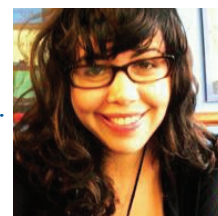
What do I need to apply?

The entry requirement is a minimum grade of 2.2 in an honours level Bachelor's degree (level 8 in the Bologna Framework) or the GPA equivalent of 2.2 in the institution which awarded the degree. This varies from institution to institution but equates to a GPA of around 3.0 on undergraduate degrees from most North American universities.

Student testimonial

Renee Summers, US

'This is an extremely comprehensive course in Irish & general social policy, with an interesting range of classes & a top-quality faculty (often reading renowned publications from the professors teaching me!) Spending a year at UCD not only put me at the centre of intellectual activity in Ireland, but also helped to immerse me in Dublin's social and cultural life.'



For further information see:
www.ucd.ie/appsocsc
or email: socialpolicy@ucd.ie

* Programmes are subject to continuing development and the university reserves the right to make changes at any time, before or after a student's admission.